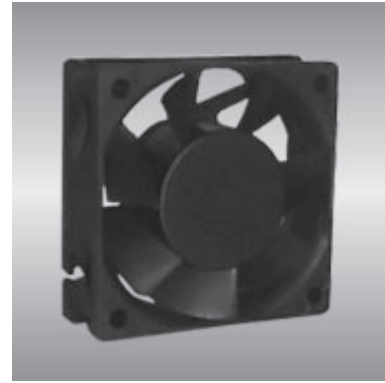


# 60 AG series

x60x20mm



## General Specifications

- Motor : 4 Poles brushless DC motor
- Frame & Impeller : Plastic(UL 94V-0)
- Storage temperature : -40° to +75°
- Operating temperature : -10° to +70°

## Major Characteristic Parameters

Model	*Bearing System	Rated Voltage	Operating Voltage Range	Rated Current	Rated Speed	Maximum Air Flow		Maximum Static Pressure		Sound Level	Weight
Part NO.	B / S / F	V	V	A	RPM	m <sup>3</sup> /min	CFM	mm-H <sub>2</sub> O	In-H <sub>2</sub> O	dBA	g
AGE06020_12J	B / S	12	7.0~13.2	0.07	3200	0.38	13.5	3.0	0.12	24.0	56
AGE06020_12L	B / S	12	7.0~13.2	0.09	3600	0.42	14.8	3.8	0.15	26.0	56
AGE06020_12M	B / S	12	7.0~13.2	0.11	4000	0.46	16.4	4.8	0.19	29.0	56
AGE06020_12H	B / S	12	7.0~13.2	0.13	4400	0.51	18.1	5.8	0.23	31.0	56
AGE06020_12U	B / S	12	7.0~13.2	0.17	4800	0.56	19.6	6.9	0.27	33.0	56

\*Bearing system B: Two Ball Bearing F: Fluid Bearing S: Sleeve Bearing

